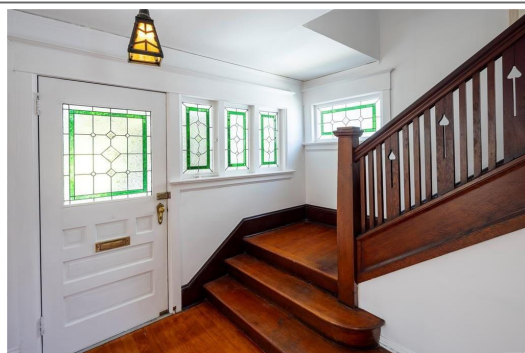




Email:  
[enquiry@nickelbros.com](mailto:enquiry@nickelbros.com)

## CAMBRIDGE CRAFTSMAN

<b>Reference #:</b>	02-22-130
<b>Price:</b>	\$178,300 CAD
<b>Location:</b>	South Island, British Columbia
<b>Local Office:</b>	Nanaimo
<b>Home Style:</b>	Character
<b>Square Footage:</b>	1,500 sqft
<b>Dimensions:</b>	27' X 34'
<b>Bed(s):</b>	3
<b>Bath(s):</b>	2
<b>Window:</b>	Stained Glass; Single Pane
<b>Heat:</b>	Forced Air Gas
<b>Floor:</b>	Hardwood; Linoleum
<b>Roof:</b>	Asphalt Shingle



## Features

This great little character home has tremendous warmth and charm. From the perfectly finished hardwood floors to the large box windows with stain glass highlights, and the paneled walls to the exquisite, ornate, unpainted staircase, this one's a keeper.

This 3-bedroom two-bathroom home boasts large rooms and huge amounts of light. This one is high, so deliveries on or close to water are best.

Call for opportunities; this is an important one to save.

Status available

Reference Number 02-22-130

Price 178300

Price Currency cad

Size 1500

Dimensions 27' X 34'

Bedrooms 3

Bathrooms 2

Windows Stained Glass; Single Pane

Floors Hardwood; Linoleum

Roof Asphalt Shingle

Exterior Wood Siding; Wood Shingle

Heat Type Forced Air Gas



Home Gallery











MLS#937108



MLS#937108





MLS#937108



MLS#937108







MLS697103



MLS697103













See the listing online at



<https://www.nickelbros.com/residential/homes/cambridge-craftsman/>.

---

*Price includes house with local delivery and lowering onto foundation. Prices may vary based on final location, site accessibility, utility line work involved and/or barging requirements.*