



Email:
enquiry@nickelbros.com

LANGLEY LOFTY RANCH

Reference #:	01-23-291	 SHORT TIME FRAME!
Price:	\$183,000 CAD	
Location:	Fraser Valley, British Columbia	
Local Office:	Port Coquitlam	
Home Style:	Custom	
Square Footage:	2,100 sqft	
Dimensions:	32' X 75'	
Bed(s):	3	
Bath(s):	2	
Window:	Thermal Vinyl	
Heat:	Radiant / Boiler	
Floor:	Hardwood; Laminate; Tile	
Roof:	Asphalt Shingle	

Features

THIS RARE HOME NEEDS TO BE ON CONTRACT IN APRIL TO BE SAVED! Let's strategize on where it can go while you get ready! Please respond immediately if its calling you! Even better, write an offer so we can imminently check if your destination is deliverable!

Does your family need a stunning majestic rancher? This home proves its grandness by the 31x35ft open living/kitchen/dining area with a sweet long wide bay window, not to mention the master bedroom at 20x22ft, with a bedroom-size walk in closet and an office room. The same spaciousness continues in the 2nd and 3rd bedrooms, one with a walk in closet. Bathrooms are oversized, tasteful and

clean.

The central gathering place has a spicy warm maple wood kitchen and island with countertop overhang for bar stools. Including beaming maple hardwood and classy crown mouldings abound!

This beauty may have options - 2100sqft for \$183K or possibly 2700sqft for \$240K. The orange line on the photo show the 2100 sq ft cutline.

This gigantic feat of a move will necessitate special engineering, processes and skill from our amazing Operations team, but that is what Nickel Bros does best! Help us save this home from demolition! Call your local office today to arrange a viewing or to speak with your local representative!

Status available

Reference Number 01-23-291

Price 183000

Price Currency cad

Size 2100

Dimensions 32' X 75'

Bedrooms 3

Bathrooms 2

Windows Thermal Vinyl

Floors Hardwood; Laminate; Tile

Roof Asphalt Shingle

Exterior Wood Siding; Hardy Board

Heat Type Radiant / Boiler

Home

Gallery







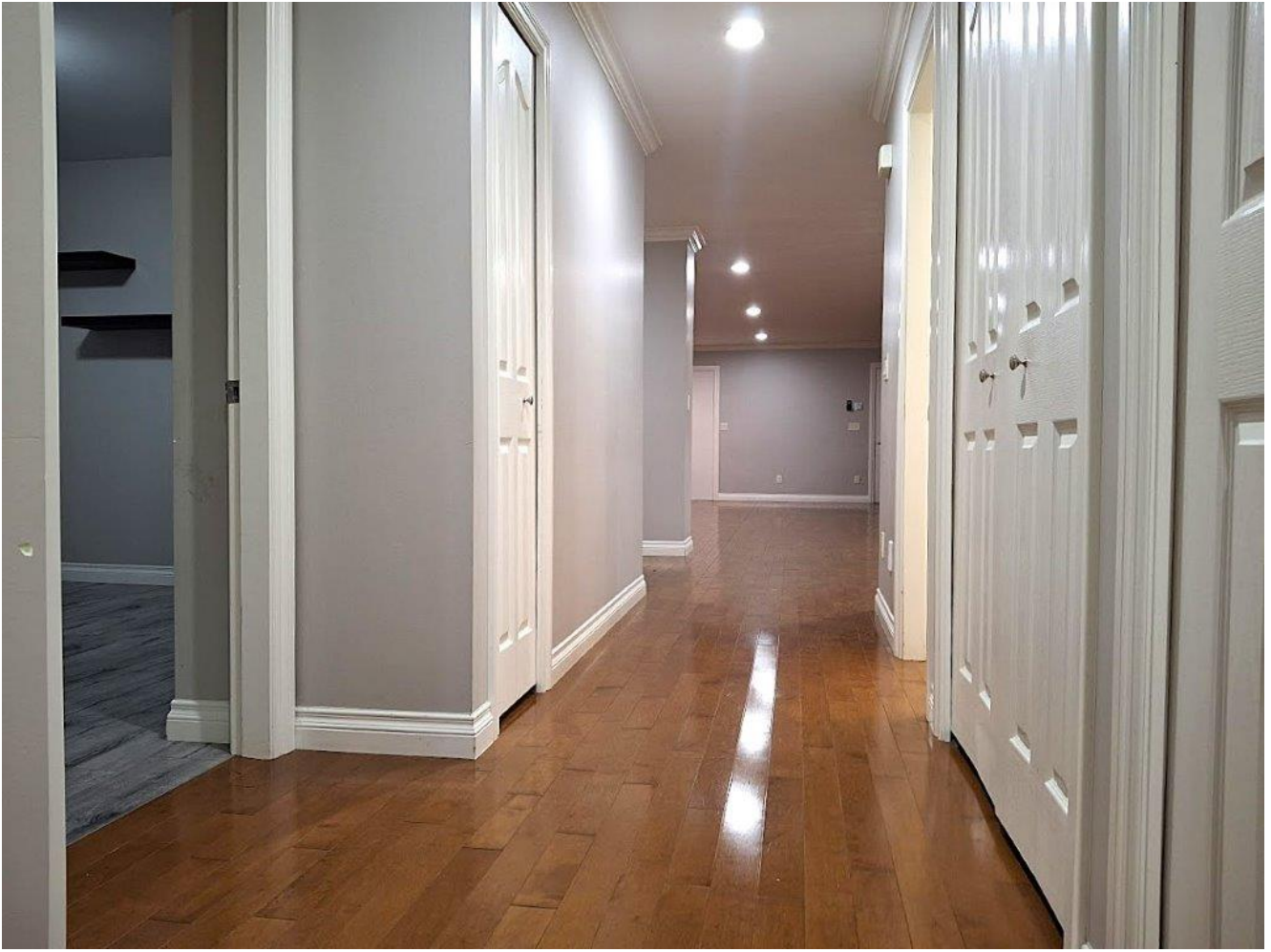
























See the listing online at <https://www.nickelbros.com/residential/homes/langley-lofty-ranch/>.

Price includes house with local delivery and lowering onto foundation. Prices may vary based on final location, site accessibility, utility line work involved and/or bargaining requirements.